



Vestil Manufacturing Corp.

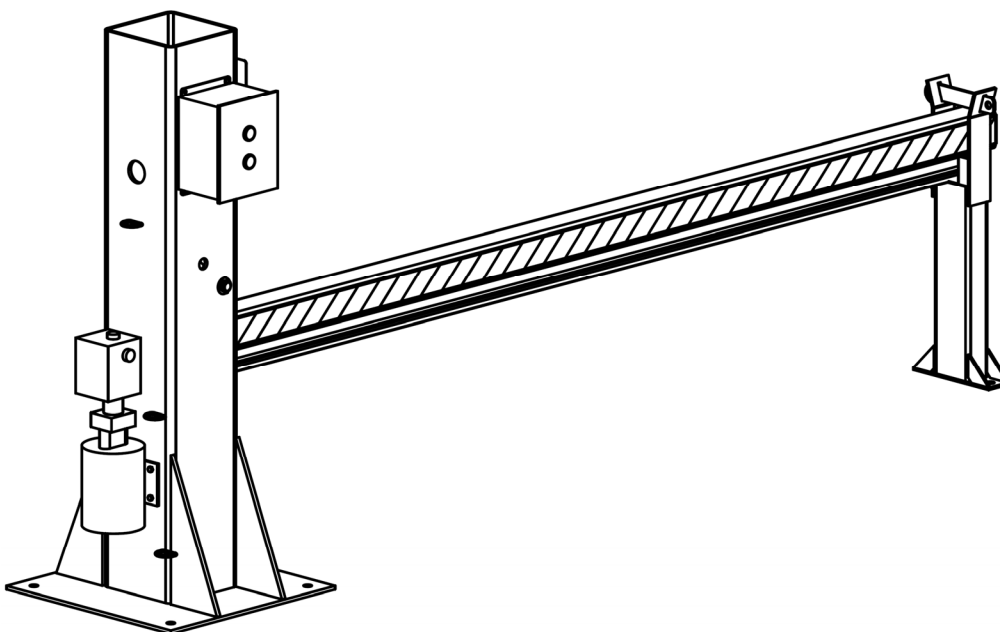
2999 North Wayne Street, P.O. Box 507, Angola, IN 46703

Telephone: (260) 665-7586 -or- Toll Free (800) 348-0868

Fax: (260) 665-1339

www.vestilmfg.com e-mail: info@vestil.com

Instruction Manual DJG-100 and DJG-100-10



Receiving instructions:

After delivery, remove the packaging from the product. Inspect the product closely to determine whether it sustained damage during transport. If damage is discovered, record a complete description of it on the bill of lading. If the product is undamaged, discard the packaging.

NOTE:

The end-user is solely responsible for confirming that product design, installation, use, and maintenance comply with laws, regulations, codes, and mandatory standards applied where the product is used.

Replacement Parts and Technical Assistance:

To order replacement parts, labels, and accessories, contact the technical service and parts department online at http://www.vestilmfg.com/parts_info.htm. Alternatively, you may request replacement parts and/or service by calling (260) 665-7586 and asking for the Parts Department.

Table of Contents

Signal Words.....	2
Hazards of Improper Use.....	2
Exploded Parts Diagrams and Bills of Materials.....	3-5
115V, 1-Phase Electrical Layout Diagram and Circuit Diagram.....	6-7
208-230V, 1-Phase Electrical Layout Diagram and Circuit Diagram.....	8-9
460V, 3-Phase Electrical Layout Diagram and Circuit Diagram.....	10-11
Installation.....	12-13
Operating the Barricade.....	13
Inspections and Maintenance.....	14
Labeling Diagram	14
Limited Warranty.....	15

Signal Words

This manual uses SIGNAL WORDS to direct the reader's attention to statements about uses of the product that could result in personal injury or property damage. Each signal word connotes a specific hazard level. The following are definitions of signal words that might appear in this manual.



Identifies a hazardous situation which, if not avoided, **WILL** result in **DEATH** or **SERIOUS INJURY**. Use of this signal word is limited to the most extreme situations.



Identifies a hazardous situation which, if not avoided, **COULD** result in **DEATH** or **SERIOUS INJURY**.



Indicates a hazardous situation which, if not avoided, **COULD** result in **MINOR** or **MODERATE** injury.



Identifies practices likely to result in product/property damage, such as operation that might damage the product.

Hazards of Improper Use:



Improper or careless use might result in serious personal injury.

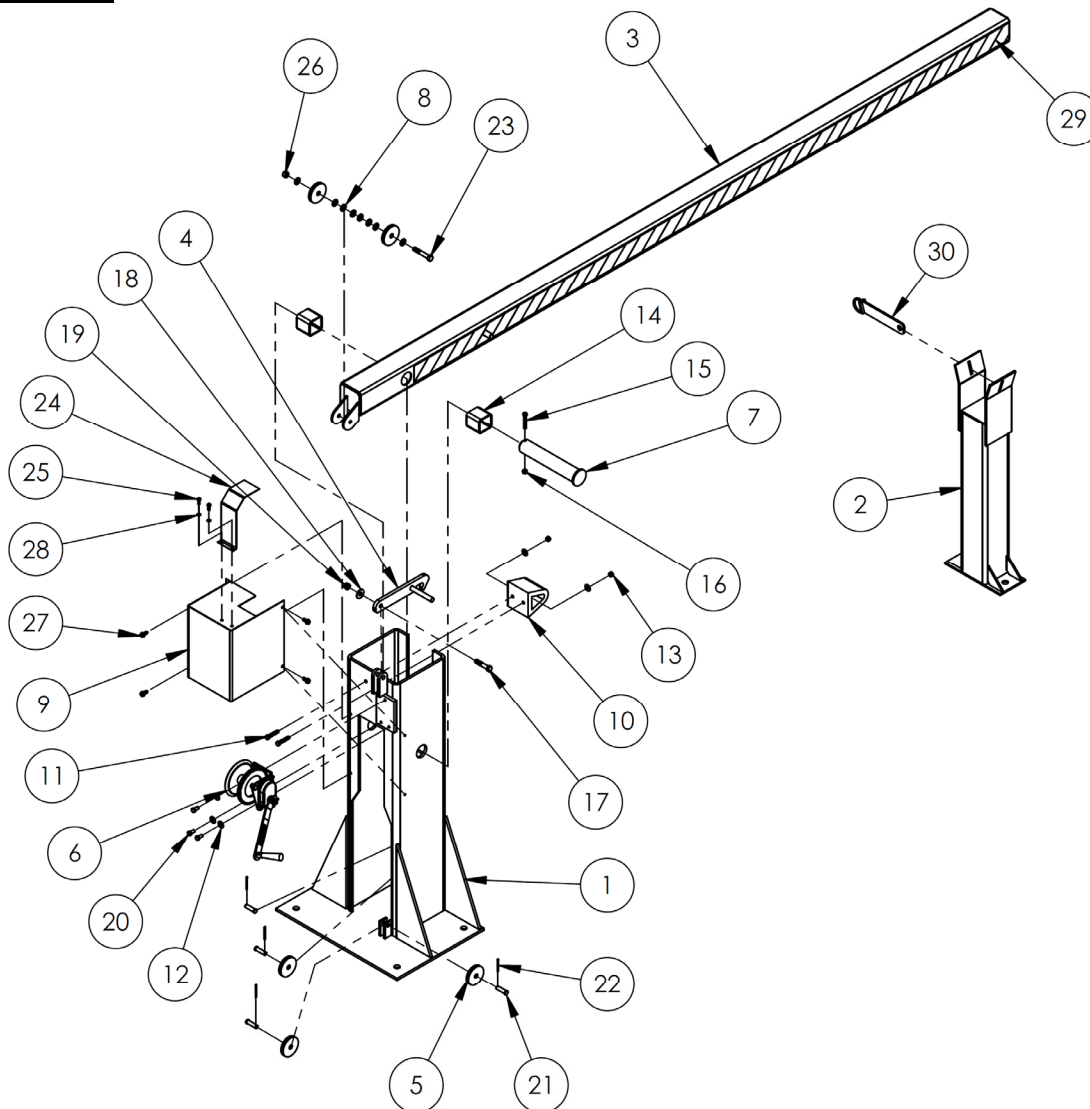
- **Read and understand the entire manual before assembling, installing, using or servicing this product.**
- DO NOT attempt to resolve any problem(s) with the product unless you are both authorized to do so and certain that it will be safe to use afterwards.
- Anchor the barrier system to an intact, concrete surface with $\frac{3}{4}$ " anchor bolts of appropriate length (selected by your building engineer).
- DO NOT modify the product in any way without first obtaining written approval from Vestil. Unapproved modifications automatically void the Limited Warranty (p. 15) and might make the product unsafe to use.
- This barricade should only be used to direct vehicular traffic. It is not a guardrail.
- Do not apply any weight to the barricade arm, particularly as the barricade is opened. Do not hold onto the arm while it rises.
- Inspect the product as recommended in the "Inspections and Maintenance" section on p. 14. Do not use the product unless it is in normal condition.
- DO NOT use this barricade UNLESS all labels are present, easily readable (not significantly faded), and undamaged. (See "Labeling Diagram" on p. 14).



Proper maintenance is essential for this product to remain in normal, working condition.

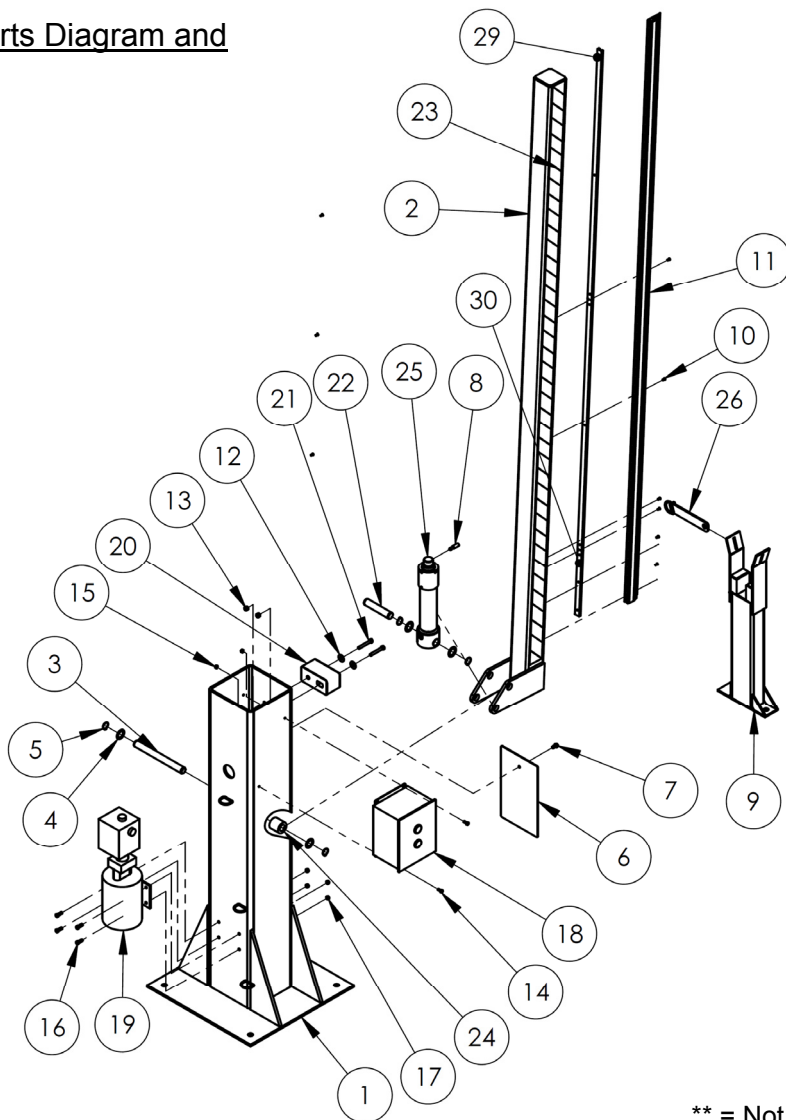
- Periodically lubricate pivot points.
- Do not use brake fluid or jack oils in the hydraulic system. If oil is needed, use an anti-wear hydraulic oil with a viscosity grade of 150 SUS at 100°F, (ISO 32 cSt @ 40°C), or Dexron transmission fluid.

DJG-100MW Exploded Parts Diagram and Bill of Materials



Item	Part no.	Description	Qty.	Item	Part no.	Description	Qty.
1	23-514-062	Frame, weldment, base tube	1	16	37021	Nylon insert lock nut, gr. 2, z-finish, 5/16"-18	1
2	23-514-061	Frame, weldment, arm rest	1	17	11213	Bolt, HHCS, #2, z-plated, 1/2"-13x2 1/2"	1
3	23-514-063	Weldment, arm	1	18	33012	Flat washer, low carbon, z-finish, 1/2"	1
4	23-537-001	Weldment, arm lock	1	19	37030	1/2"-13 Nylon insert lock nut	1
5	99-027-003	Pulley, cable	5	20	11103	Hex bolt, gr. A, z-plated, 3/8"-16x3 3/4"	3
6	21-042-002-001	Hand winch, foldable handle grip	1	21	21-112-003	Pin, 1/2"x1 15/16" retaining clevis	4
7	23-112-004	Pin, arm stop	1	22	65080	Ext. prong cotter pin, z-finish, 1/8"x2"	4
8	33011	Flat washer, USS, plain, 1/2"	8	23	11215	Hex bolt, gr. A, z-finish, 1/2"-13x3"	1
9	23-524-103	Weldment, guard, shroud	1	24	23-024-343	Guard, winch, formed	1
10	23-048-001	Bumper, arm stop	1	25	11003	Hex bolt, gr. A, z-plated, 1/4"-20x3 3/4"	2
11	11111	Bolt, gr. A, zinc plated, 3/8"-16x2"	2	26	36109	Hex nut, gr. A, plain, 1/2"-13	1
12	33008	Flat washer, low carbon, USS, z-plated, 3/8"	5	27	32416	Thread cutting screw, slotted, type F, z-plated, 5/16"-18x3 3/4"	4
13	36106	Hex nut, gr. A, z-plated, 3/8"-16	2	28	33618	Medium split lock washer, 1/4"	2
14	23-024-154	Guard, tube	2	29	99-051-022	Black & yellow safety tape, 118"	2
15	11063	Hex bolt, gr. A, z-finish, 5/16"-18 x 2 1/2"	1	30	23-537-020	Weldment, lock bar	1

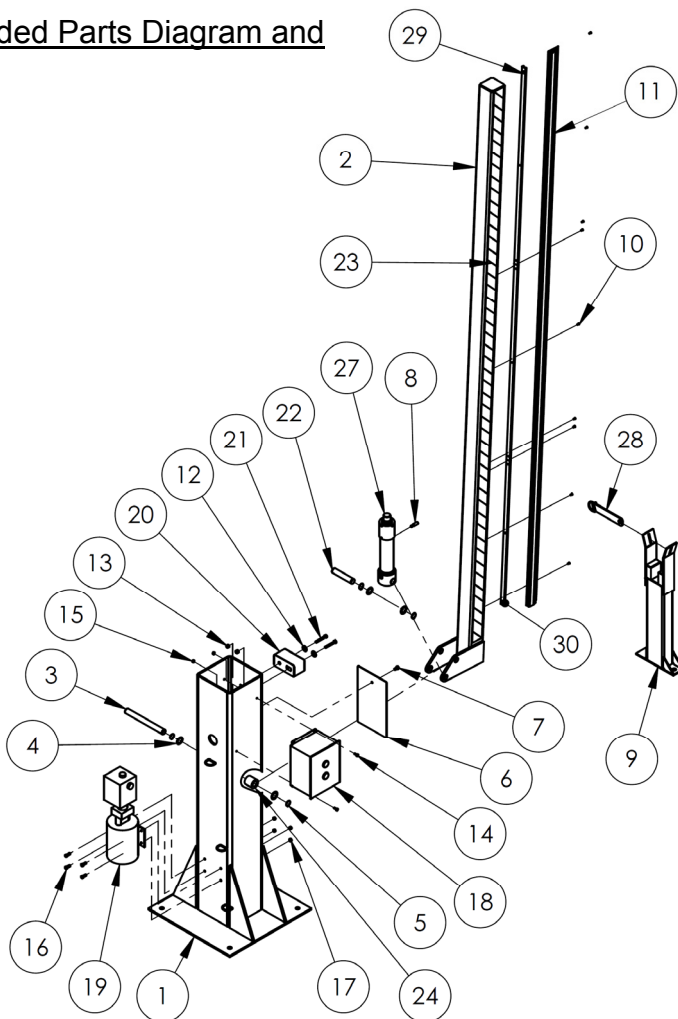
DJG-100 Exploded Parts Diagram and Bill of Materials



** = Not shown in diagram

Item	Part no.	Description	Qty.	Item	Part no.	Description	Qty.
1	23-514-020	Frame, weldment	1	16	11055	Hex bolt, grade A, zinc plated, 5/16"-18x1"	4
2	23-514-019	Frame, weldment, safety bar	1	17	36104	Hex nut, grade A, zinc plated, 5/16"-18	4
3	23-112-003	Pin, hinge	1	18	23-529-001	Control box enclosure	1
4	33454	Narrow machinery bushing, plain, 1 3/4" x 18ga.	4	19	23-137-001	Motor, manifold, reservoir assy.	1
5	68021	External retaining ring, phosphate finish, 1 1/8"	4	20	29-001-017-001	Bumper	1
6	23-024-095	Guard/cover, plate	1	21	11114	Bolt, HHCS, 3/8"-16x2 3/4"	2
7	32416	Thread cutting screw, slotted, type F, zinc plated, 5/16"-18x3/4"	1	22	23-112-002	Pin, hinge	1
8	01-118-001	Bolt, cylinder retaining	1	23	99-051-021	Black & yellow safety tape. 114"	2
9	23-514-018	Weldment, arm rest	1	24	01-020-006	Boss, EHLT double cylinder	2
10	41125	Rivet, SB64, 3/16" x 0.250"	9	25	99-021-903-001	Cylinder, hydraulic, 2" x 10"	1
11	23-015-001	Guard, extrusion, rubber	1	26	23-537-020	Weldment, lock bar	1
12	33010	Washer, flat	2	**27	23-034-002	Photo eye, transmitter-receiver	1
13	37024	Nylon insert lock nut, grade 2, zinc finish, 3/8"-16	2	**28	23-034-003	Control box, interface multiplexer	1
14	11003	Hex bolt, grade A, zinc plated, 1/4"-20x3/4"	2	29	23-034-001	Guard, extrusion, aluminum	2
15	36102	Hex nut, grade A, zinc plated, 1/4"-20	2	30	23-034-004	Guard, extrusion, aluminum	1

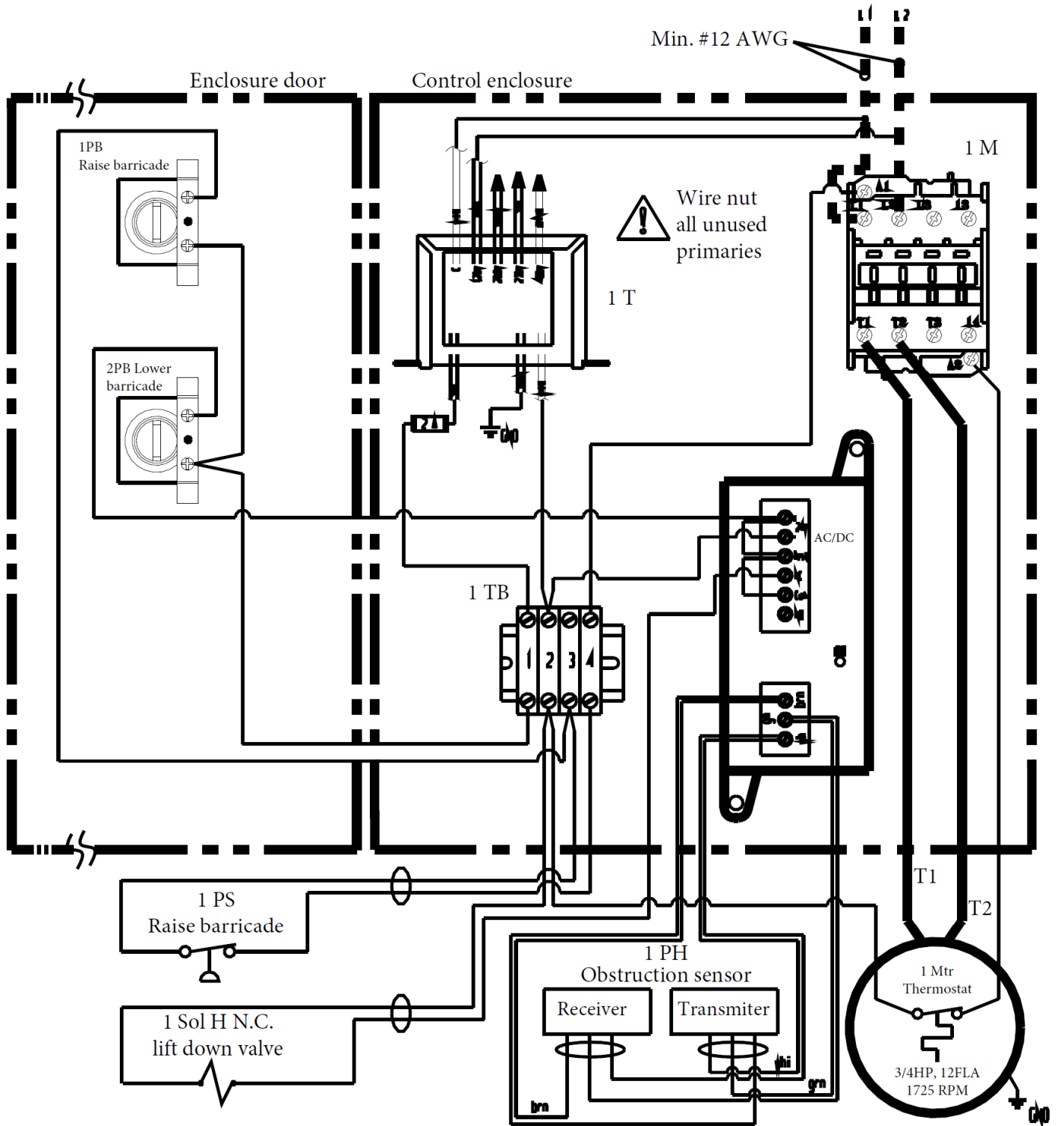
DJG-100-10 Exploded Parts Diagram and Bill of Materials



** = Not shown in diagram

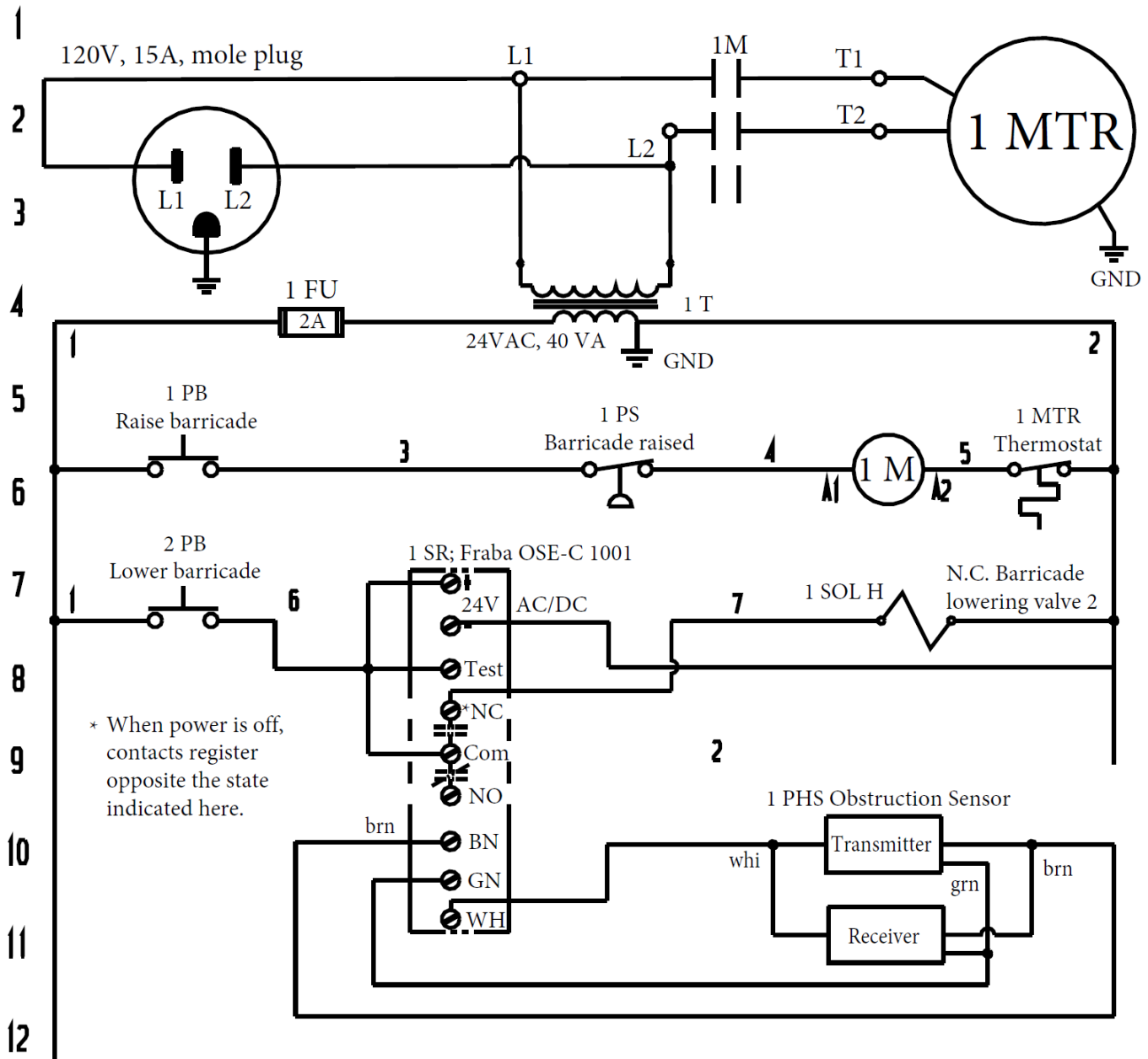
Item	Part no.	Description	Qty.	Item	Part no.	Description	Qty.
1	23-514-020	Frame, weldment	1	16	11055	Hex bolt, grade A, zinc plated, 5/16"-18x1"	4
2	23-514-096	Frame, weldment, safety bar	1	17	36104	Hex nut, grade A, zinc plated, 5/16"-18	4
3	23-112-003	Pin, hinge	1	18	23-529-001	Control box enclosure	1
4	33454	Narrow machinery bushing, plain, 1 3/4" x 18ga.	4	19	23-137-001	Motor, manifold, reservoir assy.	1
5	68021	External retaining ring, phosphate finish, 1 1/8"	4	20	29-001-017-001	Bumper	1
6	23-024-095	Guard/cover, plate	1	21	11114	Bolt, HHCS, 3/8"-16x2 3/4"	2
7	32416	Thread cutting screw, slotted, type F, zinc plated, 5/16"-18x3/4"	1	22	23-112-002	Pin, hinge	1
8	01-118-001	Bolt, cylinder retaining	1	23	99-051-023	Black & yellow safety tape. 114"	2
9	23-514-018	Weldment, arm rest	1	24	01-020-006	Boss, EHLT double cylinder	2
10	41125	Rivet, SB64, 3/16" x 0.250"	9	**25	23-034-002	Photo eye, transmitter-receiver	1
11	23-015-004	Guard, extrusion, rubber	1	**26	23-034-003	Control box, interface multiplexer	1
12	33010	Washer, flat	2	27	99-021-903-001	Cylinder, hydraulic, 2" x 10"	1
13	37024	Nylon insert lock nut, grade 2, zinc finish, 3/8"-16	2	28	23-537-020	Weldment, lock bar	1
14	11003	Hex bolt, grade A, zinc plated, 1/4"-20x3/4"	2	29	23-034-001	Guard, extrusion, aluminum	2
15	36102	Hex nut, grade A, zinc plated, 1/4"-20	2	30	23-034-005	Guard, extrusion, aluminum	1

Electrical Layout: 115V, 1-Phase with Sensor (23-124-001 Rev. H)

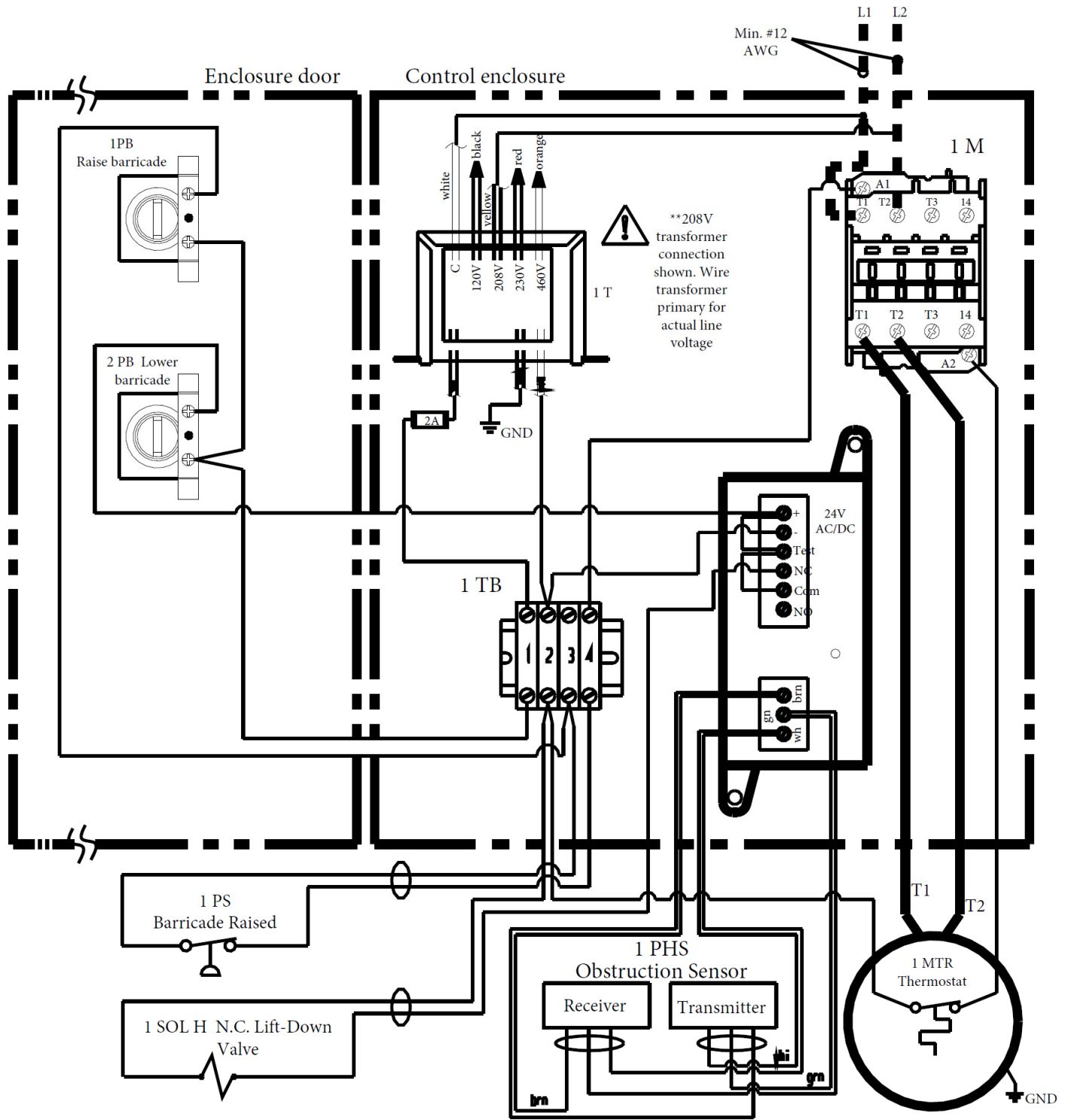


NOTES: All components are represented as they would be with the unit in its "Home" (resting) position. Home position is defined as the barricade lowered with power off.

Electrical Circuit Diagram: 115V, 1-phase with sensor (23-124-001 Rev. H)

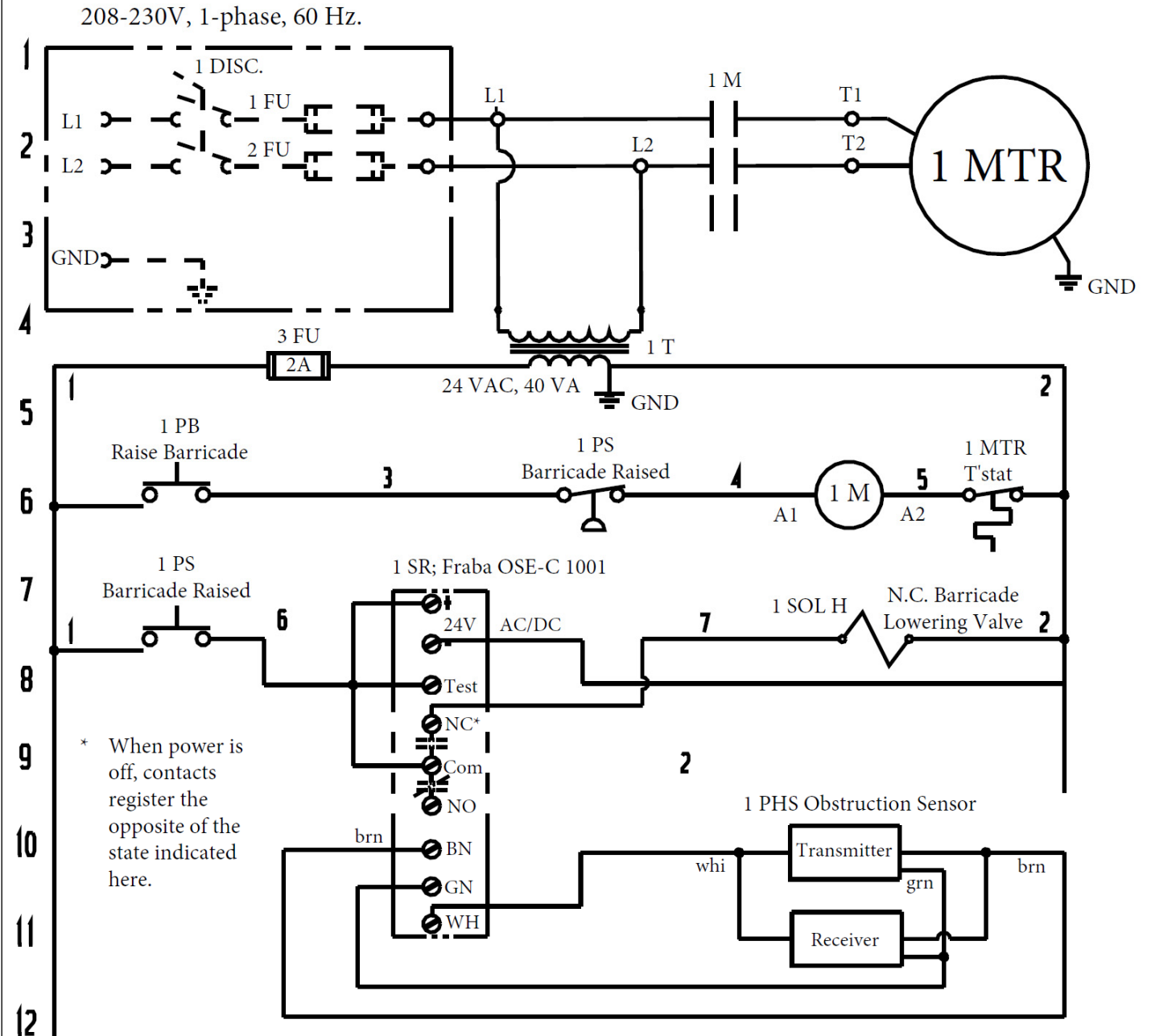


Electrical Layout: 208-230V, 1-Phase with Sensor (23-124-002 Rev. G)

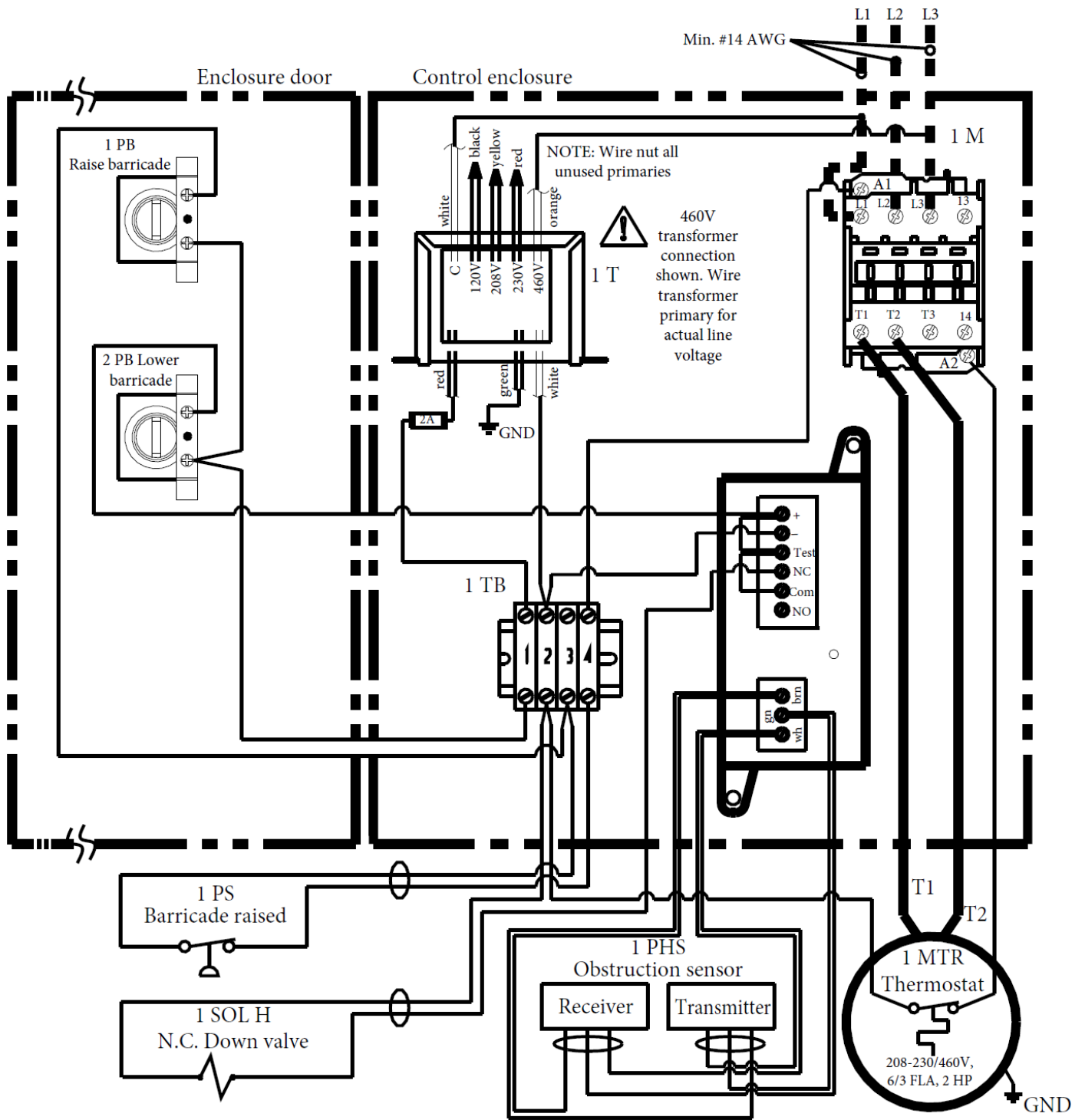


NOTE: All components are represented as they are when the unit is in the home, or resting, position. Home position is defined as when barricade is lowered with power off.

Electrical Circuit Diagram: 208-230V, 1-Phase with Sensor (23-124-002 Rev. G)

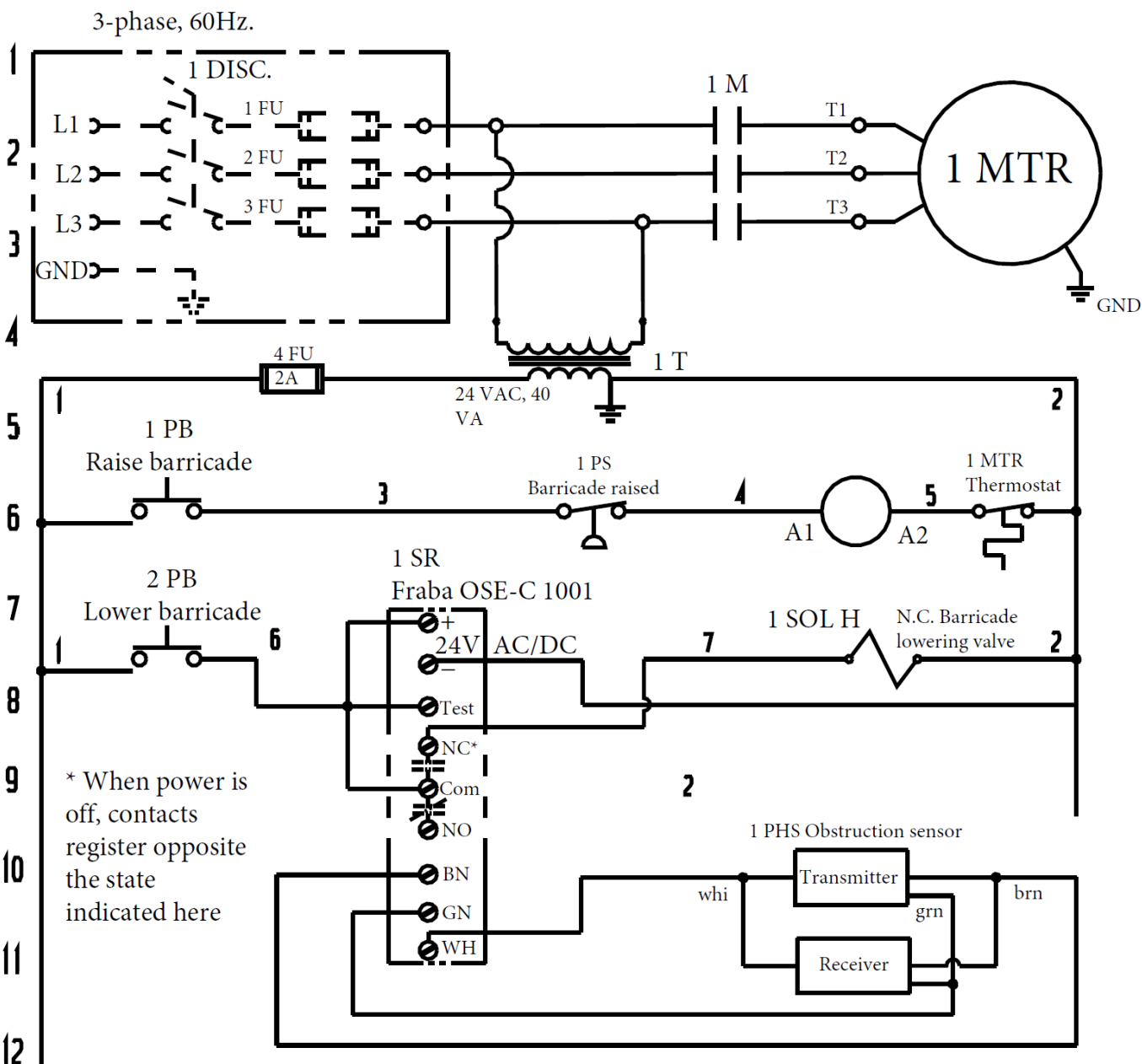


Electrical Layout: 460V, 3-Phase with Sensor (23-124-003 Rev. G)



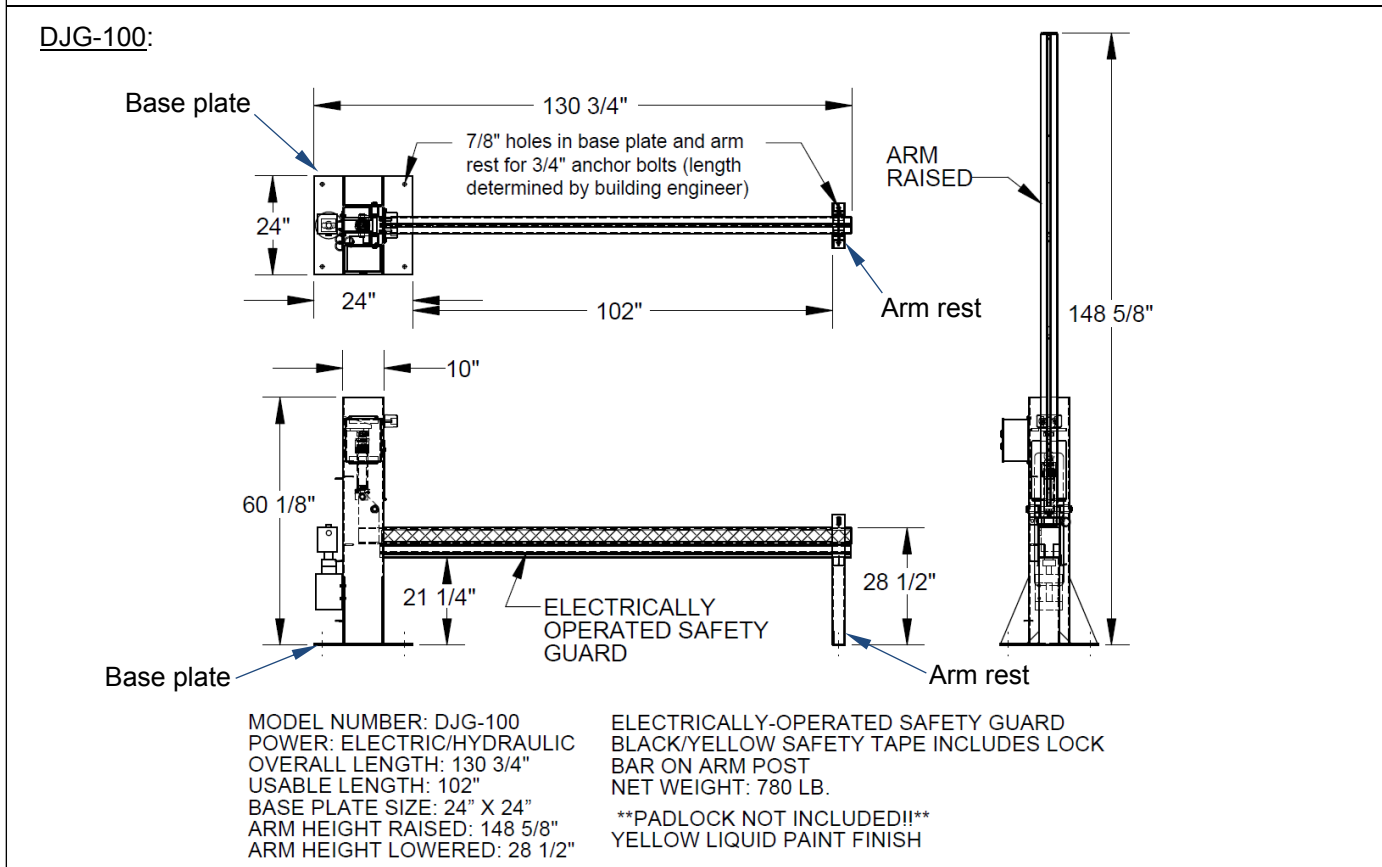
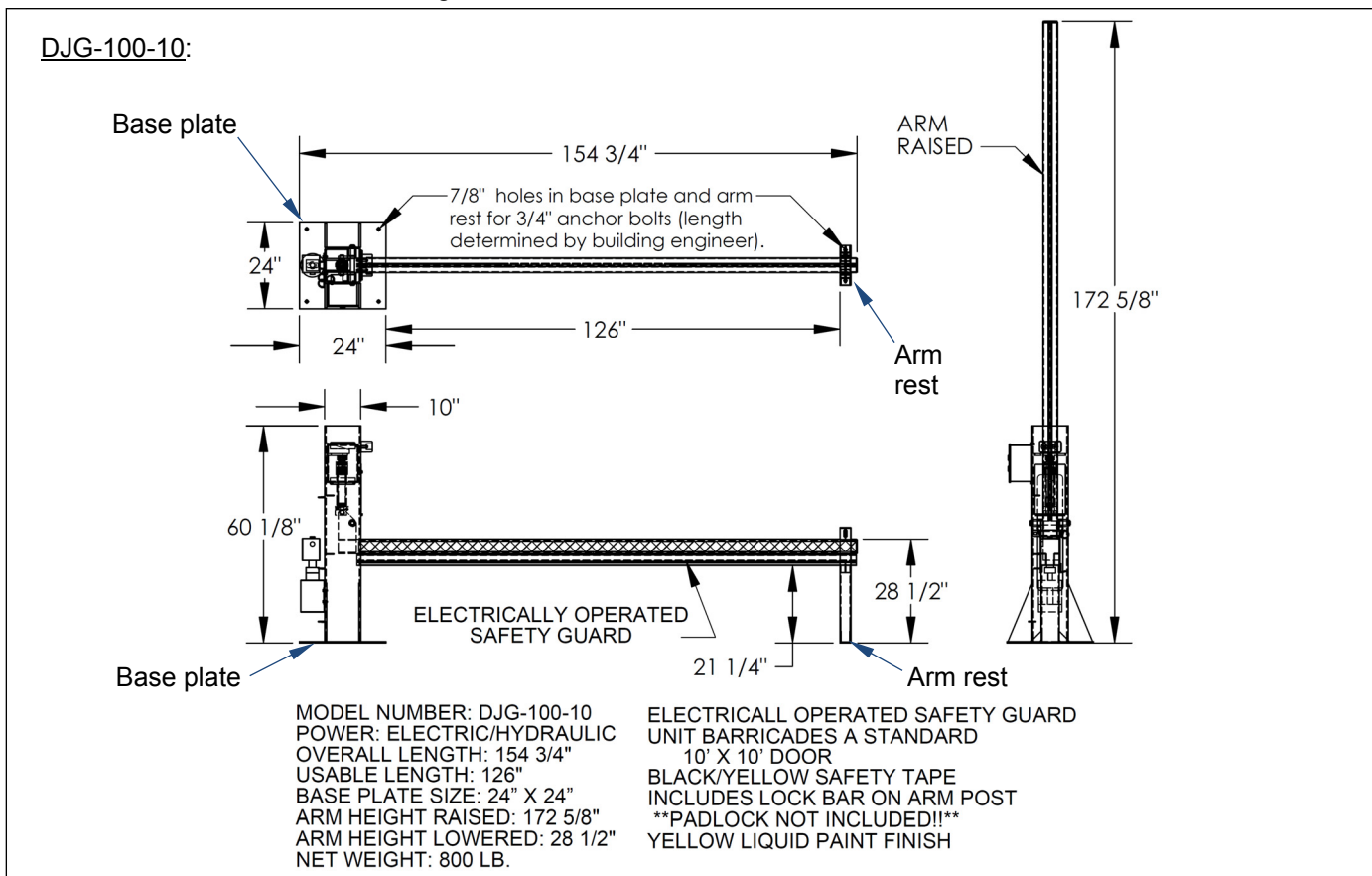
NOTE: All components are represented as they would be with the unit in its "home", or resting, position. Home position is defined as having the barricade completely lowered with power off.

Electrical Circuit Diagram: 460V, 3-Phase with Sensor (23-124-003 Rev. G)

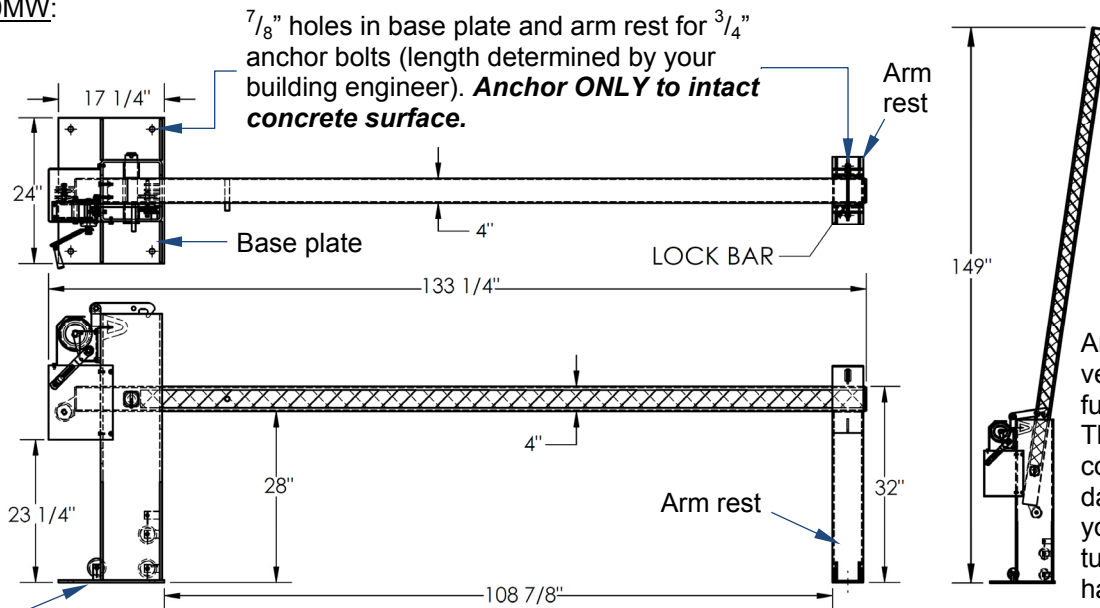


Installation:

The diagrams below provide dimensions for proper installations of both models (DJG-100 and DJG-100-10). Install $\frac{3}{4}$ " anchor bolts of appropriate length--determined by your building engineer--through the bolt holes in the base plate and arm rest to secure the unit to the ground. **Anchor ONLY to an intact concrete surface.**



DJG-100MW:



Arm is not vertical when fully raised. The barricade could be damaged if you continue turning the handle.

MODEL NUMBER: DJG-100MW
 OVERALL LENGTH: 133 1/4"
 OVERALL WIDTH: 24"
 ARM HEIGHT RAISED: 149"
 ARM HEIGHT LOWERED: 32"
 FITS STANDARD 8' WIDE DOOR
 BLACK/YELLOW SAFETY TAPE
 INCLUDES LOCK BAR ON ARM POST

BLACK/YELLOW SAFETY TAPE
 INCLUDES LOCK BAR ON ARM POST
 NET WEIGHT: 405 LB.
 PADLOCK NOT INCLUDED!!
 MECHANICAL HAND WINCH OPERATION
 YELLOW LIQUID PAINT FINISH

Operation:

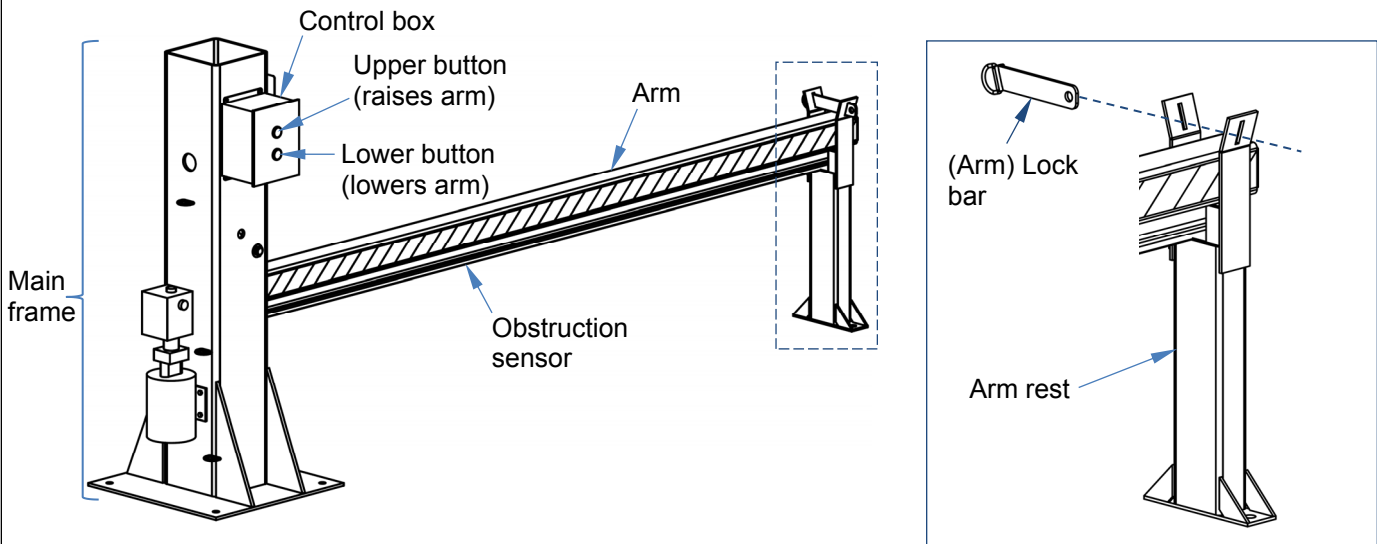
To raise the arm, simply turn the winch handle clockwise. As the right-most diagram above indicates, the arm is not vertical when fully raised. Do not keep turning the handle in an attempt to further raise the arm. To lower the arm, turn the handle counterclockwise.

Operating the barricade (electric-hydraulic models):

To raise the barricade arm, press the upper button on the control box. Press the lower button to lower the arm. The arm only moves as long as a button is pressed. The arm stops moving when the operator releases either button.

The barricade arm is equipped with an obstruction sensing switch that halts arm movement while the lower control button is pressed. The switch is mounted to the underside of the arm. If the arm contacts an obstruction while lowering, a vehicle for example, the switch is activated and the arm stops moving. Press the upper button to raise the arm and remove the obstruction before lowering the arm again.

The arm can be locked in the lowered configuration by inserting the locking bar through the slots in the arm rest. Do not try to raise the arm with the lock bar installed.



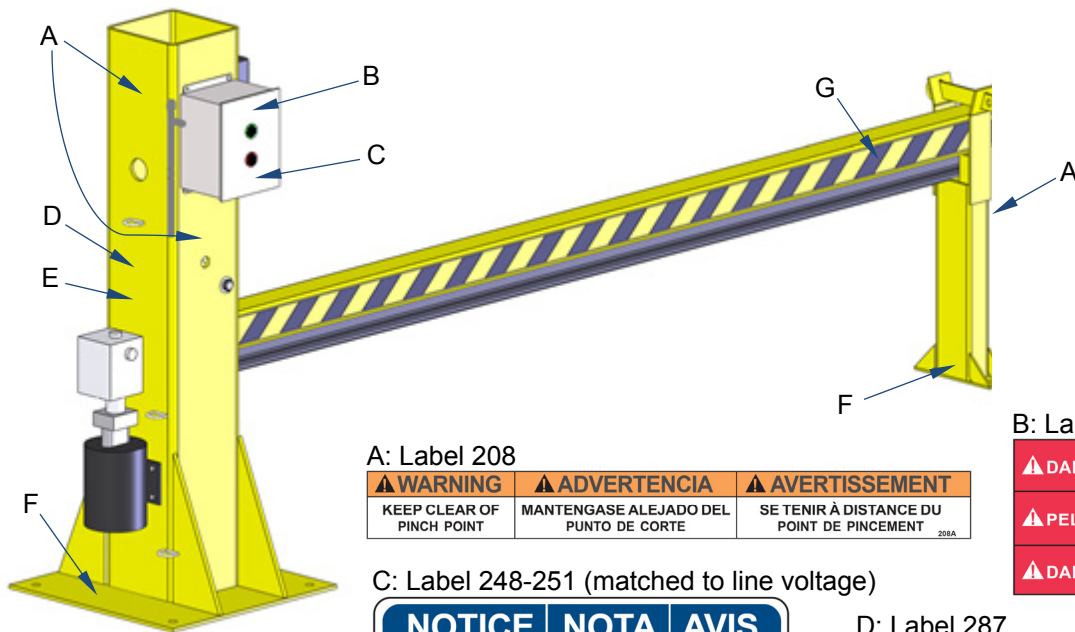
Inspections and Maintenance:

After installing the unit but before using it for the first time, create a written record that describes the appearance of each major component, including the main frame, arm mechanism, arm rest, pins, electrical control box, obstruction sensor, and anchor bolts. Raise and lower the arm. Record your observations about how the unit looks and sounds as the arm raises and lowers. This written record establishes “normal condition”. When conducting future inspections compare those observations with the written record to determine whether a component is in normal condition or requires repair or replacement.

Regular inspections and maintenance are necessary for the barricade to remain in normal condition. **At least once per month, inspect the following components:**

- Obstruction sensor (mounted to underside of arm):** Raise the arm about 1 foot about the arm rest. Press against the sensor (with a broom handle, for instance). While pressing the sensor, press the lower button on the control box. Confirm that the arm does not lower when the button is pressed. If the arm still lowers, then the sensor is malfunctioning and must be repaired.
- Labels:** all labels should be readable and located as shown in the “Labeling Diagram” (below). Contact Vestil to order a replacement for any label that is not easily readable (e.g. faded or damaged) or missing.
- Hardware:**
 - Bolts, nuts, washers, pins, hitch pins;
 - Anchor bolts: Confirm that all anchor bolts are solidly attached to the ground. The barricade and arm rest should not be able to wobble.
- Main frame and arm rest:** confirm that both are square, rigid, and not severely damaged, i.e. not rusted, bent, cracked, etc. Examine all welds.
- Electrical control box, pushbuttons, and hydraulic system:** examine the box and buttons for damage. Cycle the arm all the way and all the way down. The arm should move smoothly in both directions.

Labeling diagram:



A: Label 208

▲ WARNING KEEP CLEAR OF PINCH POINT	▲ ADVERTENCIA MANTENGASE ALEJADO DEL PUNTO DE CORTE	▲ AVERTISSEMENT SE TENIR À DISTANCE DU POINT DE PINCEMENT
--	--	--

B: Label 221

▲ DANGER	ELECTRICAL SHOCK Shut power off and consult owners manual before working on this equipment.
▲ PELIGRO	EI GOLPE ELECTRICO Corte la corriente consulte el manual de propietario antes de trabajar en este equipo.
▲ DANGER	CHOC ELECTRIQUE Couper le courant et consulter le manuel d'utilisation avant de travailler sur cet équipement.

C: Label 248-251 (matched to line voltage)

NOTICE	NOTA	AVIS
POWER SUPPLY: V/ Phase/ HZ		
CONTROL VOLTAGE: V AC		
CORRIENTE: V/ Fase/ HZ		
VOLTAGE DE CONTROL: V CA		
ALIMENTATION ÉLECTRIQUE: V/ Monophase/ HZ		
VOLTAGE DE CONTRÔLE: V AC		

D: Label 287

MODEL/MODÉLO/MODÈLE _____
STATIC CAPACITY (evenly distributed) _____ lbs.
LA CAPACIDAD CONSTANTE (distribuida uniformemente) _____ kgs.
CAPACITÉ STATIQUE (distribuée régulièrement) _____ kgs.
SERIAL/SERIE/SÉRIE _____

287 REV 0812

E: Label 206

ISO 32 / 150 SUS
HYDRAULIC OIL OR NON-SYNTHETIC TRANSMISSION FLUID
ACEITE HIDRAULICO O LIQUIDOS DE TRANSMISION NO SINTETICOS
HUILE OU LIQUIDE HYDRAULIQUE NON-SYNTHEIQUE
VESTIL MANUFACTURING CORPORATION • Phone (260) 665-7586 • www.vestil.com

F: Label 204

▲ WARNING	▲ ADVERTENCIA	▲ AVERTISSEMENT
SECURE FRAME TO FLOOR	ASEGURE EL BASTIDOR AL PISO	FIXER SOLIDEMENT LE CADRE AU PLANCHER

G: Label 268



LIMITED WARRANTY

Vestil Manufacturing Corporation (“Vestil”) warrants this product to be free of defects in material and workmanship during the warranty period. Our warranty obligation is to provide a replacement for a defective, original part covered by the warranty after we receive a proper request from the Warrantee (you) for warranty service.

Who may request service?

Only a warrantee may request service. You are a warrantee if you purchased the product from Vestil or from an authorized distributor AND Vestil has been fully paid.

Definition of “original part”?

An original part is a part used to make the product as shipped to the Warrantee.

What is a “proper request”?

A request for warranty service is proper if Vestil receives: 1) a photocopy of the Customer Invoice that displays the shipping date; AND 2) a written request for warranty service including your name and phone number. Send requests by one of the following methods:

<u>US Mail</u>	<u>Fax</u>	<u>Email</u>
Vestil Manufacturing Corporation 2999 North Wayne Street, PO Box 507 Angola, IN 46703	(260) 665-1339 <u>Phone</u> (260) 665-7586	info@vestil.com Enter “Warranty service request” in subject field.

In the written request, list the parts believed to be defective and include the address where replacements should be delivered. After Vestil receives your request for warranty service, an authorized representative will contact you to determine whether your claim is covered by the warranty. Before providing warranty service, Vestil will require you to send the entire product, or just the defective part (or parts), to its facility in Angola, IN.

What is covered under the warranty?

The warranty covers defects in the following original, dynamic parts: motors, hydraulic pumps, motor controllers, and cylinders. It also covers defects in original parts that wear under normal usage conditions (“wearing parts”), such as bearings, hoses, wheels, seals, brushes, and batteries.

How long is the warranty period?

The warranty period for original dynamic components is 90 days. For wearing parts, the warranty period is 90 days. Both warranty periods begin on the date Vestil ships the product to the Warrantee. If the product was purchased from an authorized distributor, the periods begin when the distributor ships the product. Vestil may, at its sole discretion, extend a warranty period for products shipped from authorized distributors by up to 30 days to account for shipping time.

If a defective part is covered by the warranty, what will Vestil do to correct the problem?

Vestil will provide an appropriate replacement for any *covered* part. An authorized representative of Vestil will contact you to discuss your claim.

What is not covered by the warranty?

The Warrantee (you) are responsible for paying labor costs and freight costs to return the product to Vestil for warranty service.

Events that automatically void this Limited Warranty.

- Misuse;
- Negligent assembly, installation, operation or repair;
- Installation/use in corrosive environments;
- Inadequate or improper maintenance;
- Damage sustained during shipping;
- Collisions or other accidents that damage the product;
- Unauthorized modifications: Do not modify the product IN ANY WAY without first receiving written authorization from Vestil.

Do any other warranties apply to the product?

Vestil Manufacturing Corp. makes no other express warranties. All implied warranties are disclaimed to the extent allowed by law. Any implied warranty not disclaimed is limited in scope to the terms of this Limited Warranty. Vestil makes no warranty or representation that this product complies with any state or local design, performance, or safety code or standard. Noncompliance with any such code or standard is not a defect in material or workmanship.

